

Welcome to Lutton



Hello and welcome to Lutton, on behalf of the Parish Council, I hope you have had an easy move to the village and already feel you have made the right choice in moving here.

This pack is intended to help you find your way in the village and nearby surroundings though I'm sure your neighbours will already have filled you in on the important matters.

This information and more can be found on Lutton Parish Council website:

<http://www.lutton-pc.gov.uk/your-parish-council/>

If there is something we have missed please ask any of us councillors or email me at: chairman@lutton-pc.gov.uk

Other Parish Councillors:

Chris Cowdery

Joyce Evans

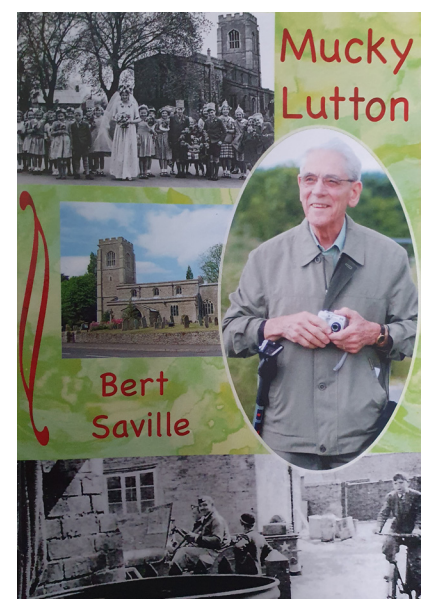
Mike Smurthwaite

Julie Lane

Jill Eaton

Lutton is a small but active community. I hope you will get involved, again if there is an activity or group you would like to see in the village, talk to the Parish Council or Village Hall Committee and help form that group. If you would like to join the Lutton WhatsApp Group please email me and I will add you on.

Carrie Walsh, Chair, Lutton Parish Council



"Mucky Lutton"

A history of the village available to purchase from the church

Pub Nights & Coffee Mornings



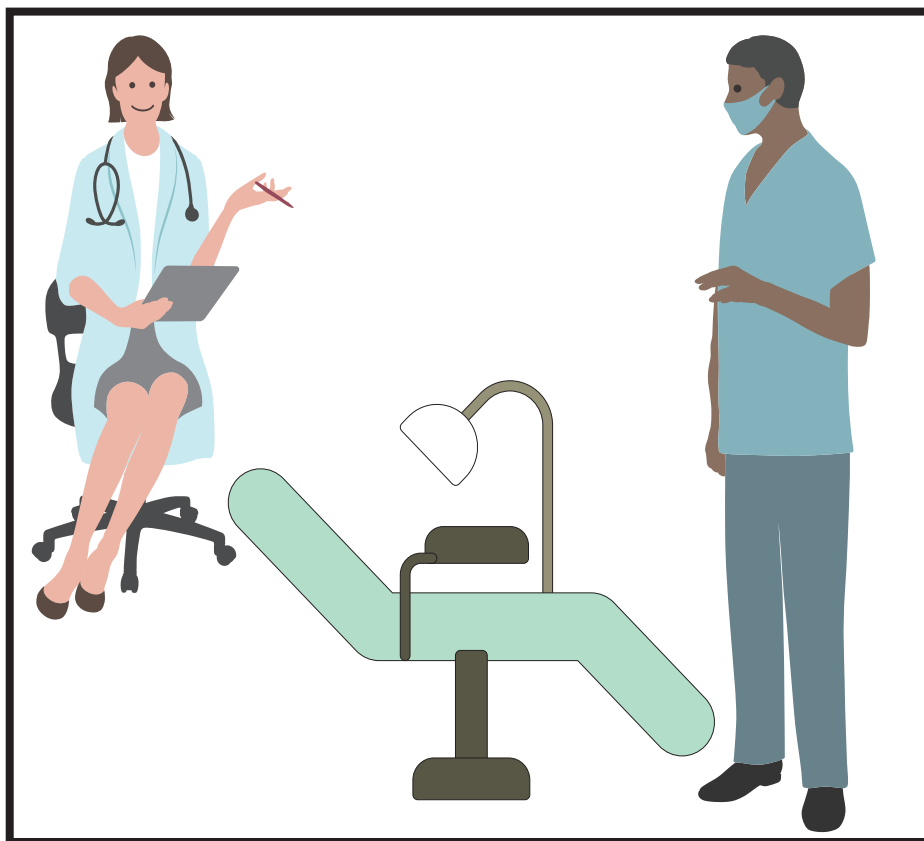
PUB NIGHTS **(FRIDAYS)**

Pub nights are the 3rd Friday
of each month

COFFEE MORNINGS **(SATURDAYS)**

Coffee mornings are the
1st Saturday of each month,
except for January 2022 when it
will be held on the 2nd Saturday.

Doctors, Dentists & Hospitals



DOCTORS

Wellside Surgery

45 High Street, Sawtry, Huntingdon, Cambridgeshire, PE28 5SU
01487 830340
4.1 miles

Lakeside Healthcare

Glaphorn Road, Oundle, Peterborough, Cambridgeshire, PE8 4JA
4.7 miles

The Sanatorium

Oundle School, Pavillion Drive, Oundle, Peterborough, Cambridgeshire, PE8 4JJ
4.8 miles

Orton Bushfield Medical Centre

Orton Goldhay, Peterborough, Cambridgeshire, PE2 5RQ
01733 371451
5.3 miles

Lakeside Healthcare at Yaxley

The Health Centre, Landsdowne Road, Yaxley, Peterborough, Cambridgeshire, PE7 3JL
01733 240478
5.4 miles

Nene Valley Medical Practice

Clayton, Orton Goldhay, Peterborough, Cambridgeshire, PE2 5GP
01733 366600
5.9 miles

Hampton Health

Unit 6B, Serpentine Green Shopping Centre, The Serpentine, Peterborough, Cambridgeshire, PE7 8DR
01733 55690
5.9 miles

DENTISTS

Oundle House Dental Practice

5 West Street, Oundle, Northamptonshire, PE8 4EJ
01832 270045
4.7 miles

Yaxley Dental Clinic

114-116 Main Street, Yaxley, Peterborough, PE7 3LP
01733 245055
5 miles

Doctors, Dentists & Hospitals

DENTISTS

Bupa Dental Care,

Peterborough Bushfield

10 Bushfield, Orton Goldhay, Peterborough,

PE2 5RQ

01733 370331

5.3 miles

Townley House Dental Practice,

36 West Street, Oundle, PE8 4EF

01832 272515

5.7 miles

The Hamptons Dental Practice

52 Hargate Way, Hampton Hargate,

Peterborough, Cambridgeshire, PE7 8DS

01733 341777

5.7 miles

Bupa Dental Care,

Peterborough Herlington

Herlington Dental Surgery, Herlington, Orton

Malborne, Cambridgeshire, PE2 5PR

01733 234566

6.1 miles

HOSPITALS

Peterborough City Hospital

Edith Cavell Campus, Bretton Gate

Peterborough, PE3 9GZ

01733 678000

Open 24 hours

Emergency Department

13 miles

Stamford & Rutland Hospital

Ryhall Rd, Stamford, PE9 1UA

01733 678000

www.peterboroughandstamford.nhs.uk

19 miles

Hinchingbrooke Hospital

Parkway Hinchingbrooke

PE29 6NT

01480 416416

Emergency Department

19 miles

Kettering General Hospital

Rothwell Road, Kettering

NN16 8UZ

01536 492000

Emergency Department

23 miles

Websites



Lutton Parish Council



<http://www.lutton-pc.gov.uk>



Lutton Village Hall



LUTTON Life PE8



Lutton Farm



Oundle &
Surrounding Villages



Oundle News

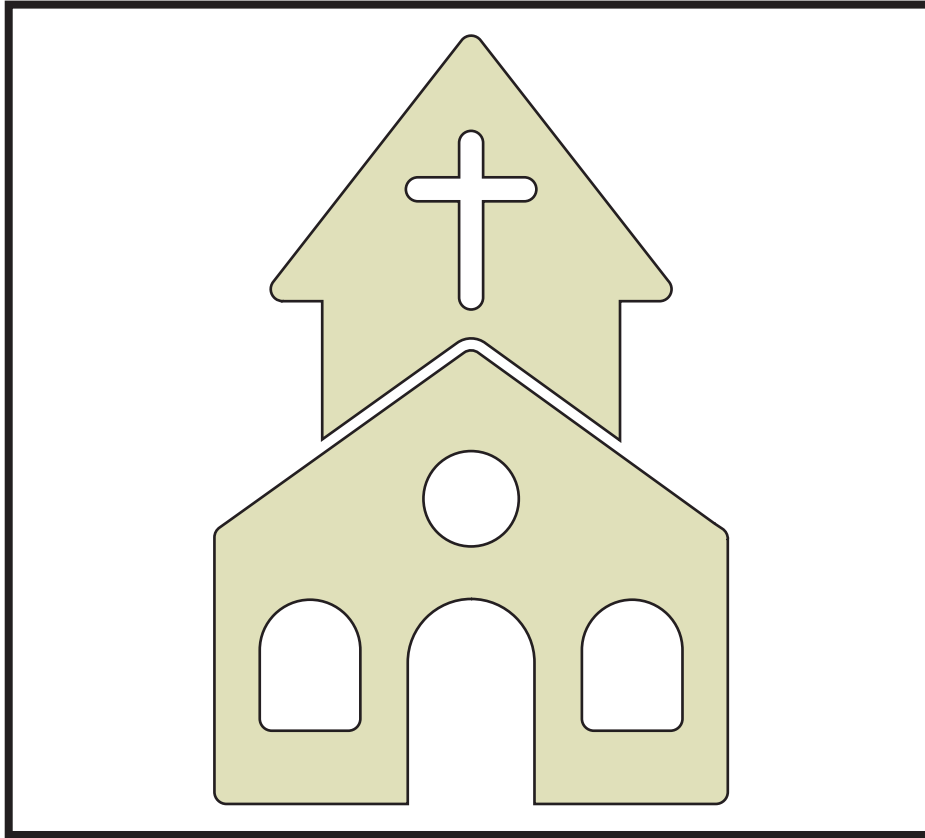


Peterborough Telegraph



MARKETPLACE PETERBOROUGH
local buying and selling site.

Church Services



The Benefice of Brookfields

The churches of Lutton, Thurning, Polebrook, Hemington,
Barnwell & Luddington in the Brook

Rev Cathy Brazier

SERVICES

We have regular Sunday services, and the time and detail of each service can be found in the Branches magazine which is delivered to your door each month.

Also, the time of the next Sunday Service will be displayed on the notice board outside the Church.

Shops, ATMs & Service Stations



NEAREST SUPERMARKETS

Lutton Fruit Far. Fruit and Veg only.
Not open out of season

Nisa Local, Stilton
Distance 3.2 Miles

The Co-operative, Sawtry
Distance 4 Miles

J. R Green, Sawtry
Distance 4.3 Miles

Waitrose, Oundle
Distance 4.3 Miles

Glebe Store, Warmington
Distance 4.4 Miles

The Co-operative, Oundle
Distance 4.4 Miles

Tesco Express, Oundle
Distance 4.5 Miles

Orton Centre, Peterborough
Distance 5.2 Miles

NEAREST ATMS

1 North Street, Stilton
Distance 3.2 Miles

J. R Green, Sawtry
Distance 4.3 Miles

The Co-operative, Oundle
Distance 4.4 Miles

Barclays Bank, Oundle
Distance 4.5 Miles

Country Service Station, A605
Distance 4.9 Miles

Peterbrough Services
6.6 Miles

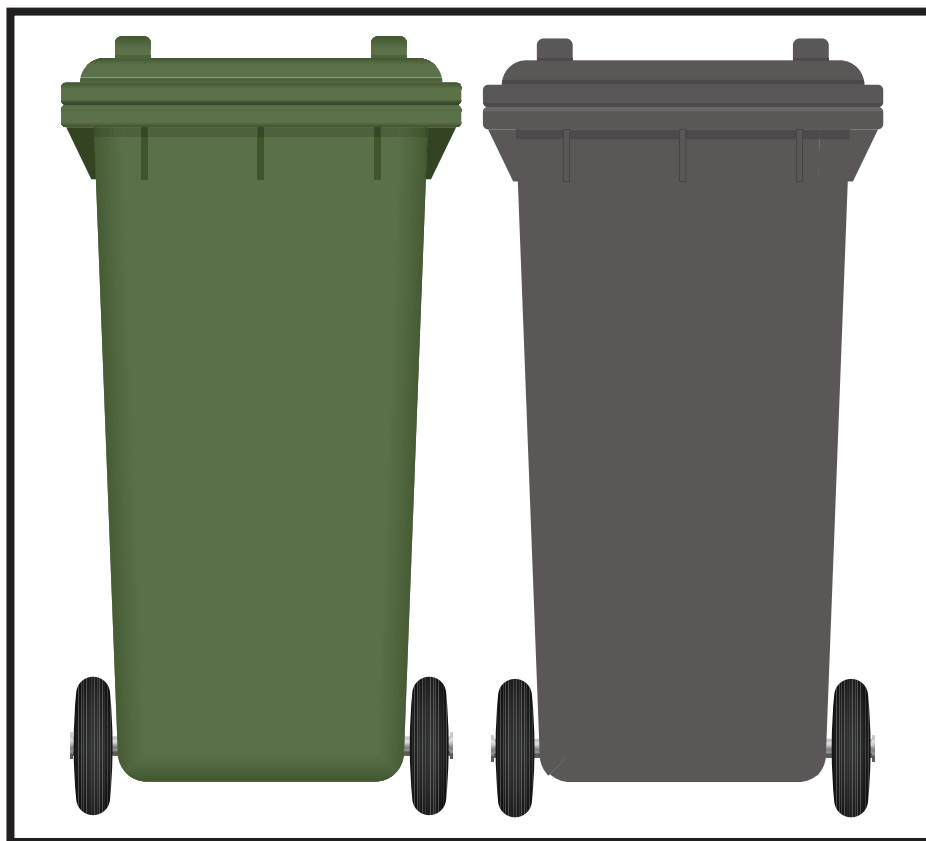
NEAREST SERVICE STATIONS

Coopers, Sawtry
Distance 4.5

Country Service Station, A605
Distance 4.9 Miles

Peterborough Services
Distance 6.6 Miles

Wheelie Bin Collection



For Wheelie bin collection days go to www.east-northamptonshire.gov.uk/wasteandrecycling

Recycling, rubbish and waste

We use wheeled bins for our refuse and recycling collections with these being collected on alternating weeks. Food waste is collected weekly in a smaller pest proof caddy.



Find my
bin
collection
day



Collection
of bulky
items



What goes
in my
recycling
bin



How is
your
recycling
sorted?



Food
waste
recycling



Report a
missed bin



Garden
Waste
Service



Report a
missed
garden bin



Report fly



Refuse

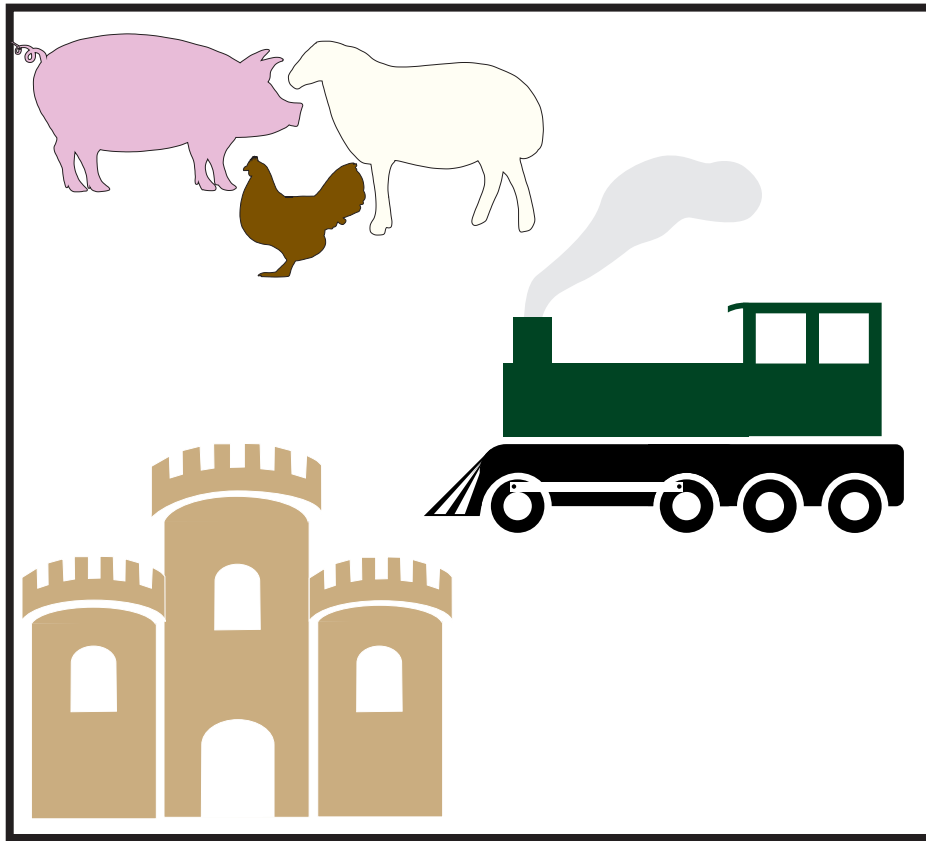


WEEE



Household

Places of Interest



Holme Fen Nature Reserve

Managed by Natural England, Holme Fen is a thriving nature reserve across 657 acres of landscape. Explore the finest silver birch woodland through a network of paths and discover the famous Holme Post, where you will be 2.75 metres below sea level, the lowest land point in Great Britain.

Holme Fen is home to a variety of wildlife species throughout the year. The meres have islands and shallow banks which encourage birds, dragonflies and marsh plants including over 500 types of fungi, enabling the reserve to be designated as a Site of Special Scientific Interest (SSSI).

Heights Drove Road, Ramsey PE26 2RS

Distance from Lutton: 8 miles

Nene valley Railway

Nene Valley Railway is the UK's leading international steam attraction, based at Wansford Station, and covering the stations of Overton (for Ferry Meadows), Orton Mere, Yarwell Junction, and Peterborough.

Stibbington, PE8 6LR

Distance from Lutton: 8.2 miles

Barnwell Country Park

Opening times

Barnwell country park is open all day, every day with free admission. However, car parking isn't always available in all areas of the park. The cafe and toilets have separate opening times.

PE8 5PB

Distance from Lutton: 8.7 miles.

Places of Interest

Lyveden New Bield

As a surviving Elizabethan garden lodge, still within its mostly undisturbed Elizabethan setting, Lyveden is unique. Together with the original garden layout, Lyveden provides a fascinating glimpse into the design and styles resulting from prosperous Elizabethan times. Set in 60 acres of woodland, wild flower meadows and open grassland, Lyveden lies in the heart of the medieval Royal Forest of Rockingham. These ancient hunting grounds provide an idyllic backdrop to Lyveden and contribute to the valuable wildlife of the area.

Lyveden, Near Oundle, PE8 5AT

Distance from Luton: 10 miles

Ferry Meadows in Nene Park

Ferry Meadows is the ideal place for a family day out and one of the largest country parks in the region. Situated less than three miles from Peterborough city centre, at the heart of Nene Park, its varied landscapes make it the favourite destination for thousands of visitors throughout the year. Whether you're looking to walk, cycle, try some watersports, enjoy a cup of tea in one of the cafés, go fishing or just explore the meadows, lakes and woodland, there's something for everyone at Ferry Meadows.

Ferry Meadows is accessible to pedestrians and cyclists at all times.

PE3 6LN (car park)

Distance from Luton: 11 miles

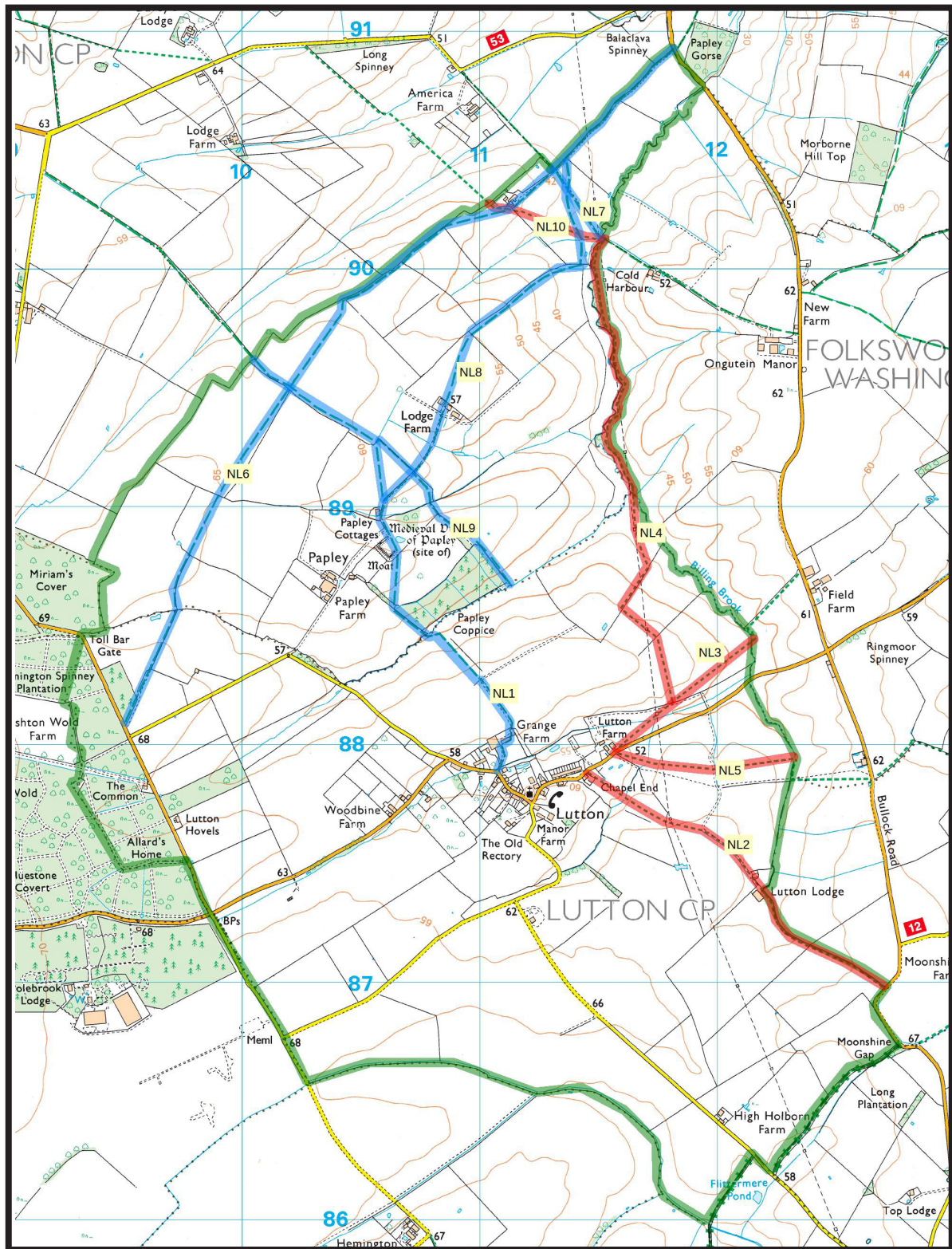
Sacrewell farm & Country Centre

Explore food, farming and the beautiful Cambridgeshire countryside on a visit to Sacrewell Heritage Farm and Country Centre. We've got plenty to keep your family entertained, with animals to meet, outdoor spaces to discover, a recently restored 18th century watermill and a large indoor soft play centre.

Closest postcode is PE8 6LB.

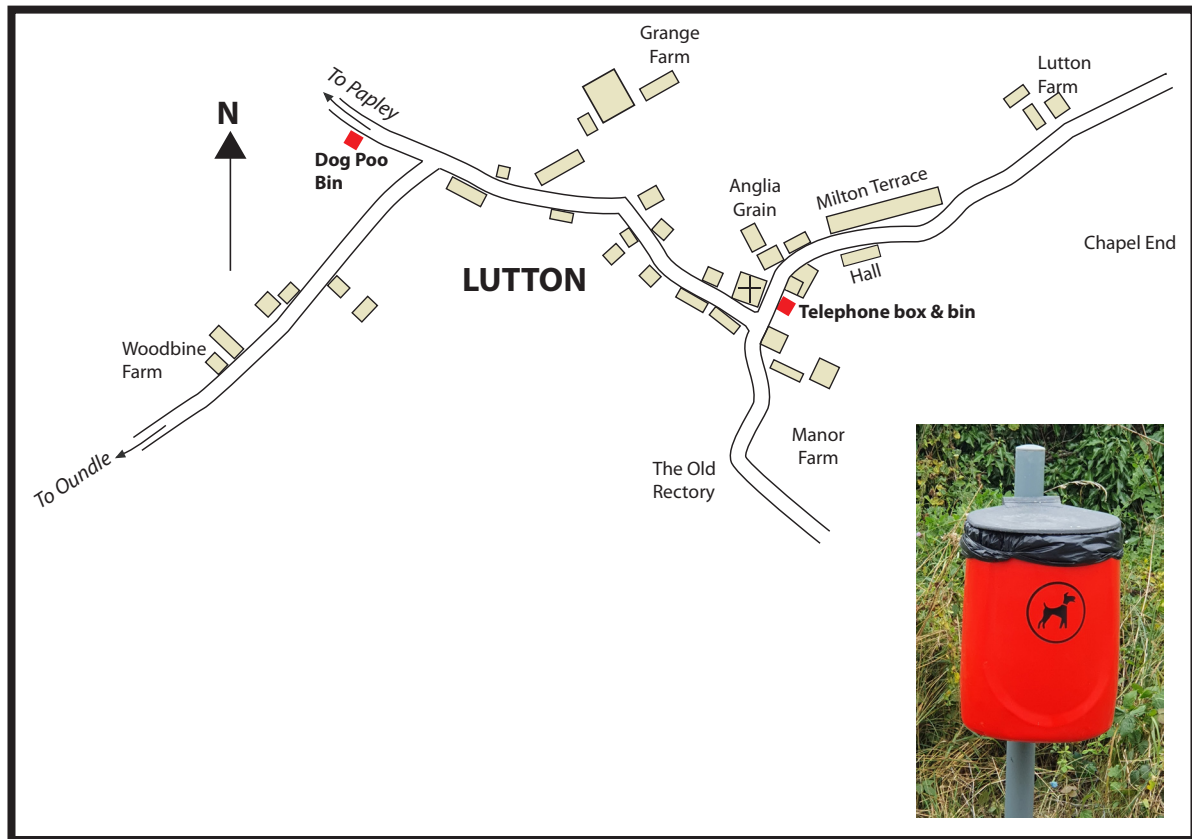
Distance from Luton: 12 miles

Footpaths around Lutton



- Parish Boundary
- Footpaths
- Bridleways

For Dog Walkers.....



Lutton has two bins, the first one is by the telephone box and can be used to dispose of dog mess.

The second bin, which has been installed on the side of the road towards Papley is specifically for the purpose of disposing of dog mess.

The village would appreciate you using these bins as the nearby lanes are frequently walked