

# Welcome to Lutton



Hello and welcome to Lutton, on behalf of the Parish Council, I hope you have had an easy move to the village and already feel you have made the right choice in moving here.

This pack is intended to help you find your way in the village and nearby surroundings though I'm sure your neighbours will already have filled you in on the important matters.

This information and more can be found on Lutton Parish Council website:

<http://www.lutton-pc.gov.uk/your-parish-council/>

If there is something we have missed please ask any of us councillors or email me at: [chairman@lutton-pc.gov.uk](mailto:chairman@lutton-pc.gov.uk)

Other Parish Councillors:

**Carrie Walsh**

**Mike Smurthwaite**

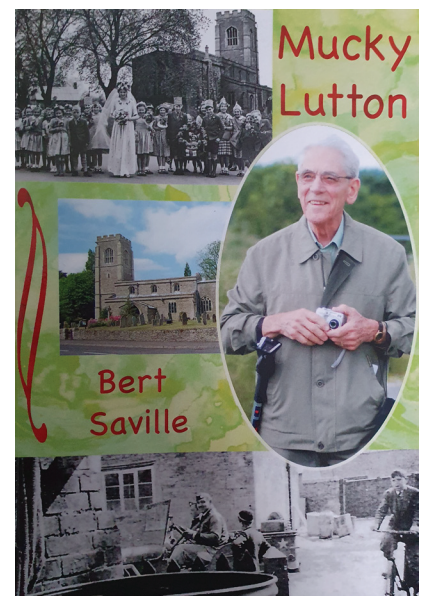
**Julie Lane**

**Jill Eaton**

*Clerk to the Parish Council:* **Joyce Evans**

Lutton is a small but active community. I hope you will get involved, again if there is an activity or group you would like to see in the village, talk to the Parish Council or Village Hall Committee and help form that group. If you would like to join the Lutton WhatsApp Group please email me and I will add you on.

**Chris Cowdery, Chair, Lutton Parish Council**



*"Mucky Lutton"*

*A history of the village available to purchase from the church*

## Pub Nights & Coffee Mornings



### **PUB NIGHTS** **(FRIDAYS)**

These are held at the Village Hall.

3rd Friday of every month

### **COFFEE MORNINGS** **(SATURDAYS)**

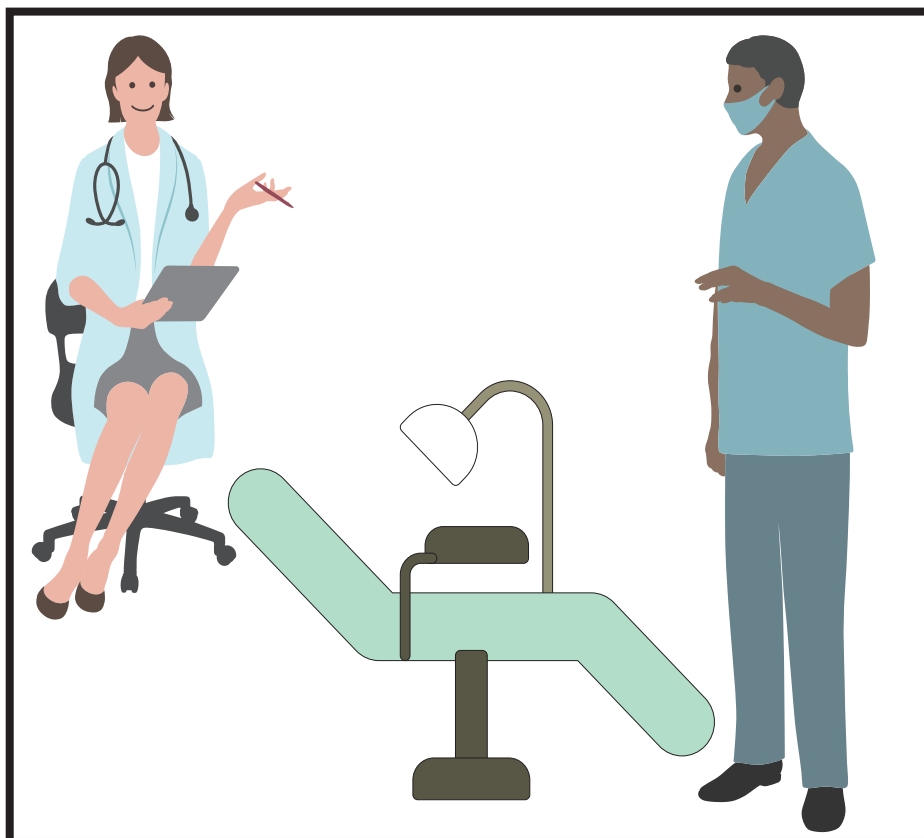
These are held at the Village Hall.

1st Saturday of every month

*There will be swing sign outside the village hall before an event as a reminder.*

*Information regarding the village hall and parish council is posted on the notice board on the wall of the village hall.*

## Doctors, Dentists & Hospitals



### **DOCTORS**

#### **Wellside Surgery**

45 High Street, Sawtry, Huntingdon, Cambridgeshire, PE28 5SU  
01487 830340  
4.1 miles

#### **Lakeside Healthcare**

Glaphorn Road, Oundle, Peterborough, Cambridgeshire, PE8 4JA  
4.7 miles

#### **The Sanatorium**

Oundle School, Pavillion Drive, Oundle, Peterborough, Cambridgeshire, PE8 4JJ  
4.8 miles

#### **Orton Bushfield Medical Centre**

Orton Goldhay, Peterborough, Cambridgeshire, PE2 5RQ  
01733 371451  
5.3 miles

#### **Lakeside Healthcare at Yaxley**

The Health Centre, Landsdowne Road, Yaxley, Peterborough, Cambridgeshire, PE7 3JL  
01733 240478  
5.4 miles

#### **Nene Valley Medical Practice**

Clayton, Orton Goldhay, Peterborough, Cambridgeshire, PE2 5GP  
01733 366600  
5.9 miles

#### **Hampton Health**

Unit 6B, Serpentine Green Shopping Centre, The Serpentine, Peterborough, Cambridgeshire, PE7 8DR  
01733 55690  
5.9 miles

### **DENTISTS**

#### **Oundle House Dental Practice**

5 West Street, Oundle, Northamptonshire, PE8 4EJ  
01832 270045  
4.7 miles

#### **Yaxley Dental Clinic**

114-116 Main Street, Yaxley, Peterborough, PE7 3LP  
01733 245055  
5 miles

# Doctors, Dentists & Hospitals

## **DENTISTS**

**Bupa Dental Care,**  
Peterborough Bushfield  
10 Bushfield, Orton Goldhay, Peterborough,  
PE2 5RQ  
01733 370331  
5.3 miles

**The Hamptons Dental Practice**  
52 Hargate Way, Hampton Hargate, Peterbor-  
ough, Cambridgeshire, PE7 8DS  
01733 341777  
5.7 miles

**Bupa Dental Care,**  
Peterborough Herlington  
Herlington Dental Surgery, Herlington, Orton  
Malborne, Cambridgeshire, PE2 5PR  
01733 234566  
6.1 miles

## **HOSPITALS**

**Peterborough City Hospital**  
Edith Cavell Campus, Bretton Gate  
Peterborough, PE3 9GZ  
01733 678000  
Open 24 hours  
**Emergency Department**  
13 miles

**Stamford & Rutland Hospital**  
Ryhall Rd, Stamford, PE9 1UA  
01733 678000  
[www.peterboroughandstamford.nhs.uk](http://www.peterboroughandstamford.nhs.uk)  
19 miles

**Hinchingbrooke Hospital**  
Parkway Hinchingbrooke  
PE29 6NT  
01480 416416  
**Emergency Department**  
19 miles

**Kettering General Hospital**  
Rothwell Road, Kettering  
NN16 8UZ  
01536 492000  
**Emergency Department**  
23 miles

## Websites



### ***Lutton Parish Council***



<http://www.lutton-pc.gov.uk>



Lutton Village Hall



LUTTON Life PE8



Lutton Farm



Oundle &  
Surrounding Villages



Oundle News

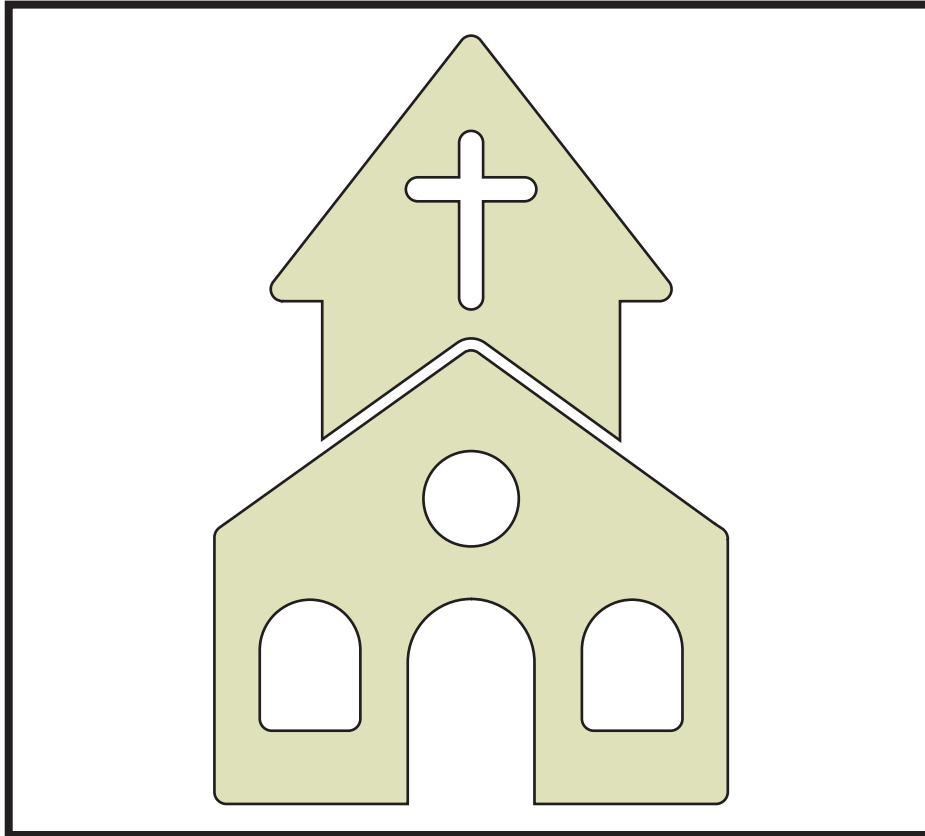


Peterborough Telegraph



MARKETPLACE PETERBOROUGH  
local buying and selling site.

# ST PETER'S CHURCH



## **The Benefice of Brookfields**

The churches of Lutton, Thurning, Polebrook, Hemington,  
Barnwell & Luddington in the Brook

During the current period of interregnum, please direct all church queries to:

*Mr George Raby (Churchwarden)*

*Ducks Nest*

*Tel: 01832 272570*

### Church Services

The monthly Branches Magazine, which is delivered to your door, gives all the information regarding services for Lutton and the other five Parishes within the Brookfields Benefice.

Please refer to the green noticeboard at the Church gate, which will show the time of the service at Lutton for the forthcoming Sunday

## Shops, ATMs & Service Stations



### **NEAREST SUPERMARKETS**

Lutton Fruit Farm

Nisa Local, Stilton  
Distance 3.2 Miles

The Co-operative, Sawtry  
Distance 4 Miles

J. R Green, Sawtry  
Distance 4.3 Miles

Waitrose, Oundle  
Distance 4.3 Miles

The Co-operative, Oundle  
Distance 4.4 Miles

Tesco Express, Oundle  
Distance 4.5 Miles

Orton Centre, Peterborough  
Distance 5.2 Miles

### **NEAREST ATMS**

1 North Street, Stilton  
Distance 3.2 Miles

The Co-operative, Sawtry  
Distance 4 Miles

J. R Green, Sawtry  
Distance 4.3 Miles

The Co-operative, Oundle  
Distance 4.4 Miles

Barclays Bank, Oundle  
Distance 4.5 Miles

Country Service Station, A605  
Distance 4.9 Miles

Peterborough Services  
6.6 Miles

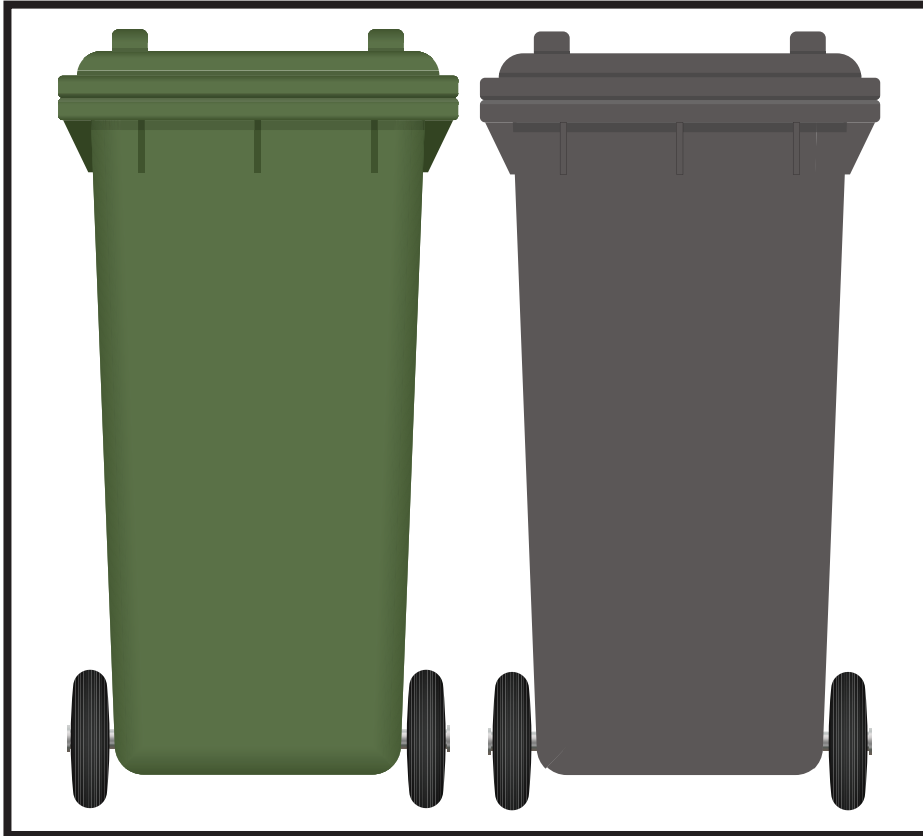
### **NEAREST SERVICE STATIONS**

Coopers, Sawtry  
Distance 4.5

Country Service Station, A605  
Distance 4.9 Miles

Peterborough Services  
Distance 6.6 Miles

## Wheelie Bin Collection

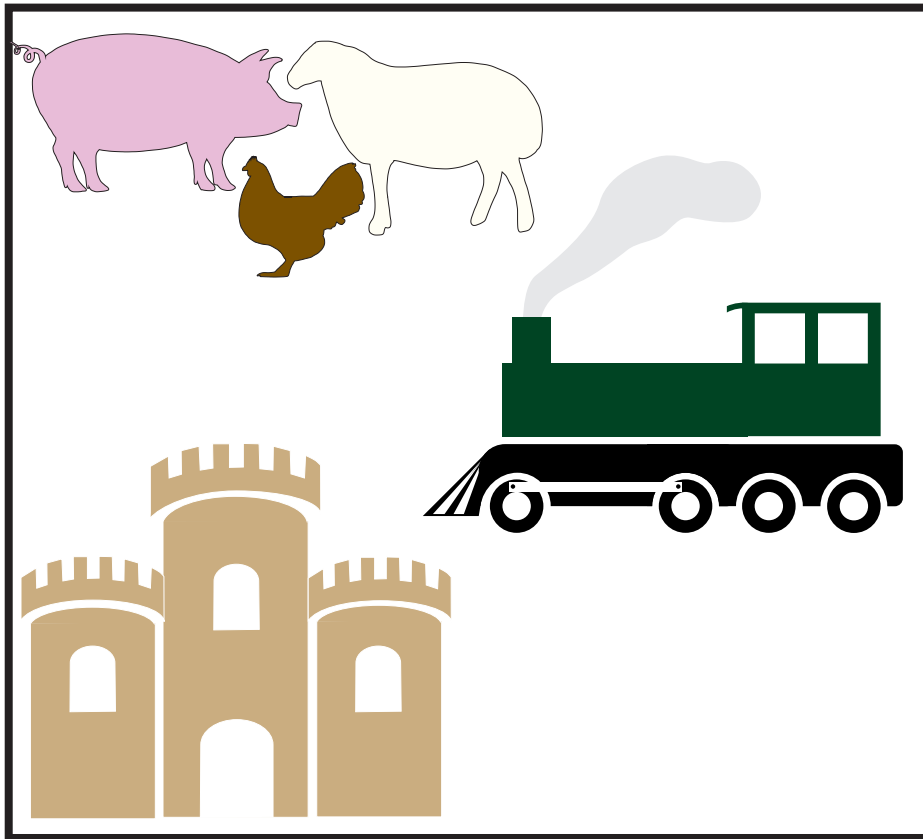


**Lutton bin collection is early on Friday mornings**

<https://www.northnorthants.gov.uk/bin-collections>



## Places of Interest



### **Nene valley Railway**

Nene Valley Railway is the UK's leading international steam attraction, based at Wansford Station, and covering the stations of Overton (for Ferry Meadows), Orton Mere, Yarwell Junction, and Peterborough.

*Stibbington, PE8 6LR*

*Distance from Lutton: 8.2 miles*

### **Barnwell Country Park**

*Opening times*

Barnwell country park is open all day, every day with free admission. However, car parking isn't always available in all areas of the park. The cafe and toilets have separate opening times.

*PE8 5PB*

*Distance from Lutton: 8.7 miles.*

### **Lyveden New Bield**

As a surviving Elizabethan garden lodge, still within its mostly undisturbed Elizabethan setting, Lyveden is unique. Together with the original garden layout, Lyveden provides a fascinating glimpse into the design and styles resulting from prosperous Elizabethan times

Set in 60 acres of woodland, wild flower meadows and open grassland, Lyveden lies in the heart of the medieval Royal Forest of Rockingham. These ancient hunting grounds provide an idyllic backdrop to Lyveden and contribute to the valuable wildlife of the area.

*Lyveden, Near Oundle, PE8 5AT*

*Distance from Lutton: 10 miles*

# Places of Interest

## **Ferry Meadows in Nene Park**

Ferry Meadows is the ideal place for a family day out and one of the largest country parks in the region. Situated less than three miles from Peterborough city centre, at the heart of Nene Park, its varied landscapes make it the favourite destination for thousands of visitors throughout the year. Whether you're looking to walk, cycle, try some watersports, enjoy a cup of tea in one of the cafés, go fishing or just explore the meadows, lakes and woodland, there's something for everyone at Ferry Meadows.

Ferry Meadows is accessible to pedestrians and cyclists at all times.

*PE3 6LN (car park)*

*Distance from Lutton: 11 miles*

## **Sacrewell farm & Country Centre**

Explore food, farming and the beautiful Cambridgeshire countryside on a visit to Sacrewell Heritage Farm and Country Centre. We've got plenty to keep your family entertained, with animals to meet, outdoor spaces to discover, a recently restored 18th century watermill and a large indoor soft play centre.

*Closest postcode is PE8 6LB.*

*Distance from Lutton: 12 miles*

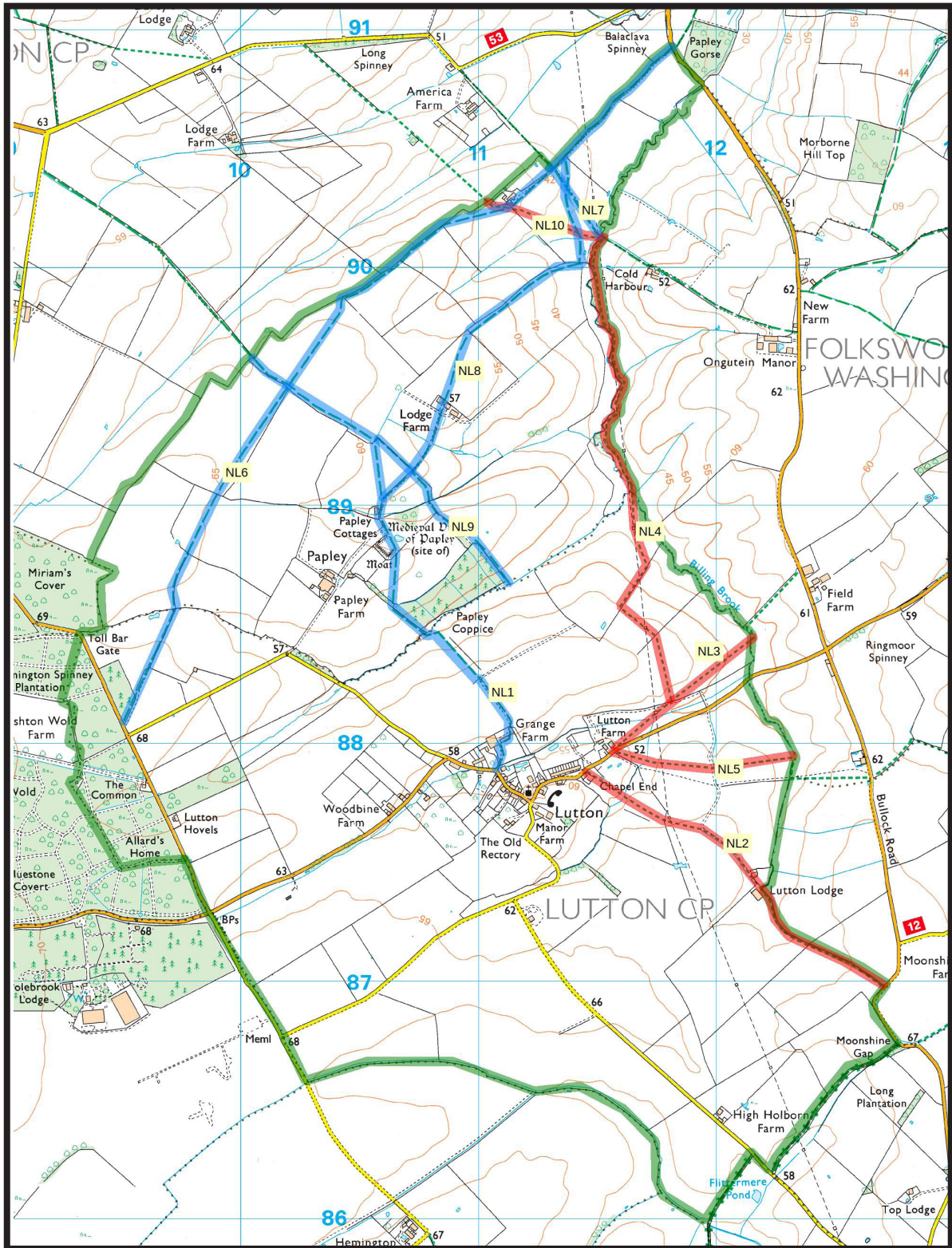
## **Rectory Farm Kitchen**



Open 7 days a week from 9am - 4pm serving delicious coffee and local produce (our kitchen closes at 3pm)

*Rectory Farm Kitchen, Lutton Road, Warmington, Peterborough, United Kingdom*

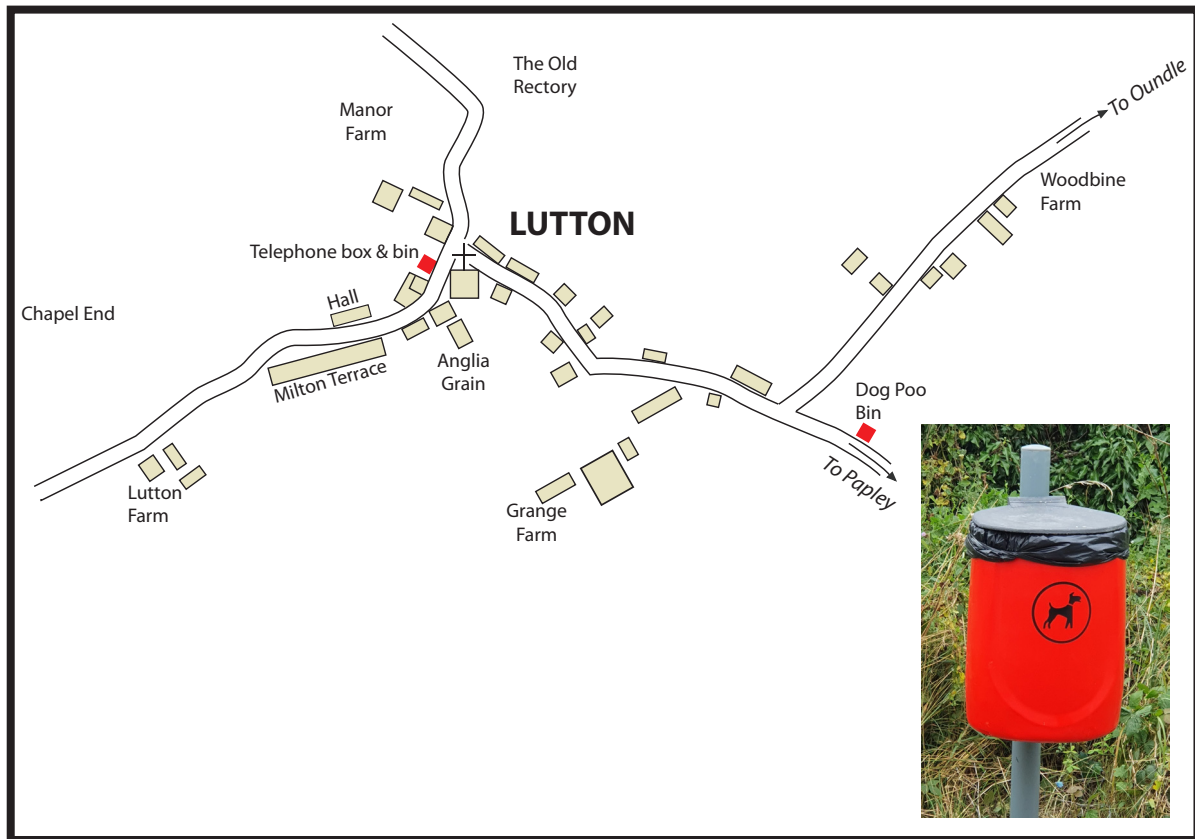
*Distance from Lutton: 2.6 miles*

# Footpaths around Lutton



-  Parish Boundary
-  Footpaths
-  Bridleways

## For Dog Walkers.....



Lutton has two bins, the first one is by the telephone box.

The second bin, which has been installed on the side of the road towards Papley is specifically for the purpose of disposing of dog mess.

The village would appreciate you using these bins as the nearby lanes are frequently walked